



*Putting the Pieces
Together*

**Completing Your
Enrollment Form**



Enrollment Form... Course Retakes

- If you failed a course and did not retake it during afternoon school, turn to the back side of the enrollment form.
- On the right, toward the middle, is a place for you to circle classes you need to repeat
- Be sure to circle which semester you need to retake
- Remember to calculate this course as part of your total of seven credits you make take next year

COURSE #	CREDIT	TEACHER REC.	COURSE #	CREDIT	TEACHER REC.
PHYSICAL EDUCATION			SOCIAL STUDIES (Elective)		
1214	.5		0281	.5	
1216	.5		0251	.5	
1218	.5		0275	.5	
1220	.5		SPEECH/DEBATE/DRAMA		
1222	1		0508	1	
1230	.5		0510	1	
1232	.5		0516	.5	
1236	.5		0518	1	
1244	.5		0522	.5	
1248	.5		0530	.5	
ROTC (Elective)			0536	.5	
1550	1		OTHER ELECTIVES		
1552	1		1555	.5	
1560	1		1430	1 or 2	
SCIENCE (Elective)			6676	1	
0440	.5		6696	1	
0439	.5		6691	1	
0450	1				

A total of seven (7) credits must be circled. If a total of seven (7) credits are not circled, you may be randomly placed in a class.

Below, please list five (5) alternative classes (these are classes that are different from the ones you have circled above) in rank order; list year long and semester classes. You will be placed in these alternative classes if the above classes do not fit in your schedule. If you do not list five (5) classes or you list classes you have already circled above, you will be placed in a class that you need for graduation requirements.

Below, please circle any core class(es) and the semester that you must re-take for credit recovery.

0104	English I	1 st sem.	2 nd sem.
0318	Algebra A	1 st sem.	2 nd sem.
0330	Algebra I	1 st sem.	2 nd sem.
0334	Geometry	1 st sem.	2 nd sem.
0408	Physical Science	1 st sem.	2 nd sem.
0285	Geography		
0280	American Government		

Career Pathways
Please check one. Refer to pages 18-25 in the course description book.

Art/Communication
 Business Management
 Health Services
 Human Services
 Industrial & Engineering Technology
 Natural Resources

Parent Approval Signature (Required) _____ Date _____ Student Signature _____

Case Manager Signature _____
(Required if student has an IEP)

****Course requests are final. There will be no schedule changes in the fall.****



Enrollment Form...Career Pathways

COURSE #	CREDIT	TEACHER REC.	COURSE #	CREDIT	TEACHER REC.
PHYSICAL EDUCATION			SOCIAL STUDIES (Elective)		
1214	.5		0281	.5	
1216	.5		0251	.5	
1218	.5		0275	.5	
1220	.5		SPEECH/DEBATE/DRAMA		
1222	1		0508	1	
1230	.5		0510	1	
1232	.5		0516	.5	
1236	.5		0518	1	
1244	.5		0522	.5	
1248	.5		0530	.5	
ROTC (Elective)			0536	.5	
1550	1		OTHER ELECTIVES		
1552	1		1555	.5	
1560	1		1430	1 or 2	
SCIENCE (Elective)			6676	1	
0440	.5		6696	1	
0439	.5		6691	1	
0450	1				

A total of seven (7) credits must be circled. If a total of seven (7) credits are not circled, you may be randomly placed in a class.

Below, please list five (5) **alternative classes** (these are classes that are **different** from the ones you have circled above) in rank order; list year long and semester classes. You will be placed in these alternative classes if the above classes do not fit in your schedule. If you do not list five (5) classes or you list classes you have already circled above, you will be placed in a class that you need for graduation requirements.

- _____
- _____
- _____
- _____
- _____

Below, please circle any core class(es) and the semester that you must re-take for credit recovery.

0104	English I	1 st sem.	2 nd sem.
0318	Algebra A	1 st sem.	2 nd sem.
0330	Algebra I	1 st sem.	2 nd sem.
0334	Geometry	1 st sem.	2 nd sem.
0408	Physical Science	1 st sem.	2 nd sem.
0285	Geography		
0280	American Government		

Career Pathways

Please check one. Refer to pages 18-25 in the course description book.

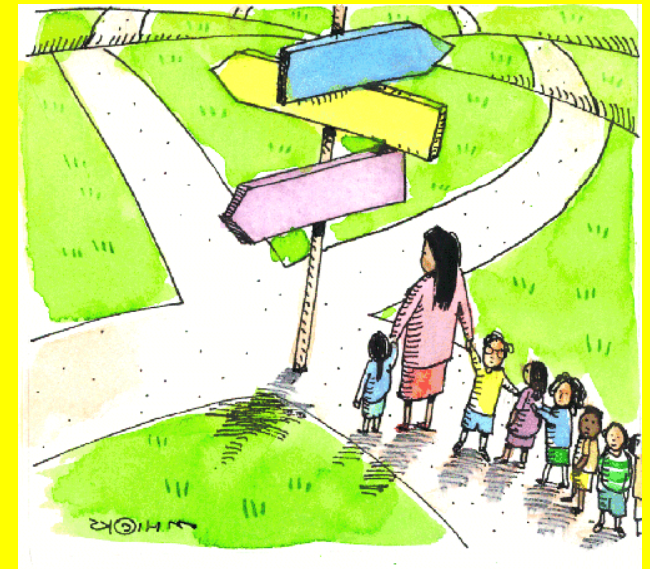
Art/Communication
 Business Management
 Health Services
 Human Services
 Industrial & Engineering Technology
 Natural Resources

Parent Approval Signature (Required) _____ Date _____

Case Manager Signature (Required if student has an IEP) _____

****Course requests are final. There will be no schedule changes in the fall.****

•Also on the back of the form is a place for you to indicate the career pathway for which you are planning: if you have questions, see your counselor



Picking Good Alternates

- See back page of enrollment form...list at least five alternate classes, listing them in order of preference.
- Seniors have priority enrollment, then juniors, then sophomores, so expect some alternates!!!



COURSE #	CREDIT	TEACHER REC.	COURSE #	CREDIT	TEACHER REC.
PHYSICAL EDUCATION			SOCIAL STUDIES (Elective)		
1214	.5		0281	.5	AP American Government
1216	.5		0251	.5	Civil War
1218	.5		0275	.5	Contemporary Issues
1220	.5		SPEECH/DEBATE/DRAMA		
1222	1		0508	1	Debate I (Speech)
1230	.5		0510	1	Debate II (Speech)
1232	.5		0516	.5	Forensics I (1 st Sem.) (Fine Art)
1236	.5		0518	1	Forensics II (Fine Art)
1244	.5		0522	.5	Introduction to Theatre (Fine Art)
1248	.5		0530	.5	Theatre Study (Fine Art)
ROTC (Elective)			0536	.5	Stage Design & Theater Tech. (Elective)
1550	1		OTHER ELECTIVES		
1552	1		1555	.5	ACT Prep Class
1560	1		1430	1 or 2	Reading
SCIENCE (Elective)			6676	1	Agriculture Science II
0440	.5		6696	1	Human Body Systems
0439	.5		6691	1	Principles of Engineering
0450	1				

A total of seven (7) credits must be circled. If a total of seven (7) credits are not circled, you may be randomly placed in a class.

Below, please list five (5) alternative classes (these are classes that are different from the ones you have circled above) in rank order; list year long and semester classes. You will be placed in these alternative classes if the above classes do not fit in your schedule. If you do not list five (5) classes or you list classes you have already circled above, you will be placed in a class that you need for graduation requirements.

- _____
- _____
- _____
- _____
- _____

Below, please circle any core class(es) and the semester that you must re-take for credit recovery.

0104	English I	1 st sem.	2 nd sem.
0318	Algebra A	1 st sem.	2 nd sem.
0330	Algebra I	1 st sem.	2 nd sem.
0334	Geometry	1 st sem.	2 nd sem.
0408	Physical Science	1 st sem.	2 nd sem.
0285	Geography		
0280	American Government		

Career Pathways
Please check one. Refer to pages 18-25 in the course description book.

Art/Communication

Business Management

Health Services

Human Services

Industrial & Engineering Technology

Natural Resources

Parent Approval Signature (Required) _____ Date _____ Student Signature _____

Case Manager Signature _____
(Required if student has an IEP)

****Course requests are final. There will be no schedule changes in the fall.****

Completing the Process



- Make sure your total credits add up to seven.
- Make sure you have circled the correct course numbers for each class.
- List **5** alternates for classes on the back page of the enrollment sheet. Once the forms are turned into the high schools, course selections are **FINAL!** They make **NO** changes in the fall, so choose wisely now, including your alternates!
- Both you and your parent / guardian need to sign your form.

Completing The Enrollment Process...What Lies Ahead

- January 27th – 29th (Monday through Thursday next week)
Make appointments with your counselor if you need further advice on coursework selection.
- January 30th (Friday) – Advisory teachers will collect your signed enrollment forms and you will update your 4-year plans.
- February 2nd – 20th – Counselors will meet with students during social studies classes to review enrollment documents and assist students as they put their schedules into the computer.



Completing The Schedule...

Also Need to Know

• WHEN YOU COME TO THE LIBRARY TO INPUT YOUR SCHEDULE, IF YOU DO NOT HAVE YOUR PARENT / GUARDIAN SIGNATURE, YOU WILL NOT BE ALLOWED TO ENROLL IN YOUR CLASSES FOR NEXT YEAR.

• NOTE: KEEP ALL YOUR ENROLLMENT MATERIALS WITH YOU IN YOUR BACKPACK SO YOU WILL HAVE THEM WITH YOU WHEN YOU NEED THEM

